

KOHLER® PORTABLE GENERATORS AND PUMPS



KOHLER®
Power Equipment

SAY HELLO TO THE LINE OF **KOHLER® POWER EQUIPMENT.**
TOUGH AS NAILS AND LOADED WITH MUSCLE.



PRO7.5E

Meet your next employee of the month. Build it just the way you want it with U-Spec™ accessories.

These portable players give you the power you need where you need it most, whether you're roofing a restaurant, framing a house or working in the middle of nowhere. We're talking generator models from 2 to 12.3 kW, pumps from 2 to 4 inches and our U-Spec™ accessory system that lets you customize your portable generators exactly as you want them.





PRO12.3EFI

It's the world's first portable generator with a KOHLER® Command PRO® EFI engine.



PRO5.2

These beasts can back up your tailgate party or power a campsite without breaking a sweat.



WP3.0

Whether it's clean water or nasty sewage, our water pumps and trash pumps get the job done.



PRO2.0iS

At 44.1 pounds, the PRO2.0iS is one of the lightest 2-kW inverter generators.

PRO5.4DES

The air-cooled KOHLER® diesel engine-powered generator with special sound-dampening enclosure makes the PRO5.4DES a quiet performer. This pro-grade portable generator comes with a convenient lifting hook and all the muscle to get the job done.

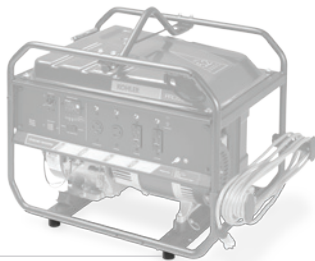


AUTO-LOCKING HAND TRUCK HANDLE KIT

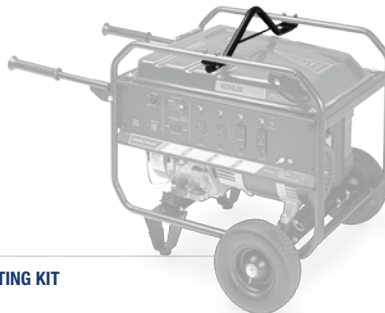
U-SPEC™ ACCESSORY SYSTEM

CUSTOM OPTIONS – AND LOTS OF THEM.

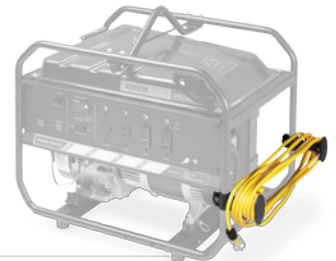
We know every job and every job site is different. That's why we offer more custom configurations than anyone. The U-Spec accessory system lets you build your generator or pump just the way you want it.



ISOLATOR KIT



LIFTING KIT



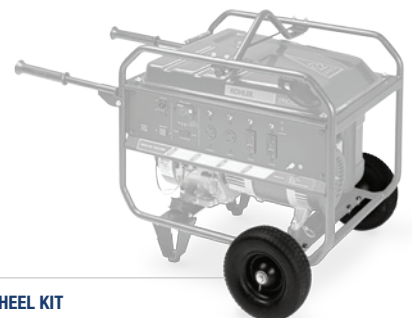
EXTENSION CORD MANAGEMENT KIT*



WHEELBARROW HANDLE KIT



LEG KIT



WHEEL KIT

* Extension cord not included.



PRO-GRADE POWER

ROCK SOLID ENGINES

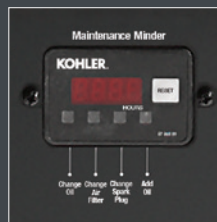
KOHLER® engines are built to get the job done – from the KOHLER Command PRO engine to our quiet-running diesel engine to the Command PRO EFI engine with fuel-saving technology. Plus, you get extra protection with Oil Sentry™. It automatically shuts the engine down in low-oil conditions to reduce wear and tear.

FEATURES



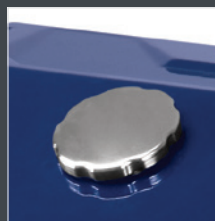
FUEL SAVER

Auto-idle feature automatically sets the engine to idle to save fuel.



EASY REMINDERS

Maintenance Minder displays hours of runtime and lights up to remind you of oil, spark plug and filter changes.



EASY REFILLS

Accu-Fill® feature provides safe, easy refilling – and less spilling – with angled fuel inlet.

WHY KOHLER® POWER EQUIPMENT?

BUILT TO LAST SINCE 1920

For over 90 years, hospitals, airports and military bases around the world have depended on KOHLER generators.

PREMIUM WARRANTY

You get our premium 3-year limited warranty backed by a network of more than 10,000 dealers.

U-SPEC™ ACCESSORY SYSTEM

Legs, handles, wheels, lifting kits – whatever you want, any way you want it.

THE WORLD'S FIRST

Our 12.3-kW portable generators are the world's first to come equipped with fuel-saving KOHLER Command PRO® EFI engines.

FREE LOANER PROGRAM*

If your KOHLER portable generator ever goes down, just swing by one of our select dealers. We'll provide a free loaner unit for warranty repairs exceeding 24 hours.

*At participating dealers, based on availability.

For more information, call **800.544.2444**
or visit **Power.Kohler.com**

KOHLER®

Printed in U.S.A.
E-2203-A 8/14
© 2014 by Kohler Co.

Use of this material for reproduction on the Internet and World Wide Web is strictly prohibited without written permission from Kohler Co.